

ANNUAL SECRETARY'S REPORT

2024 - 2025

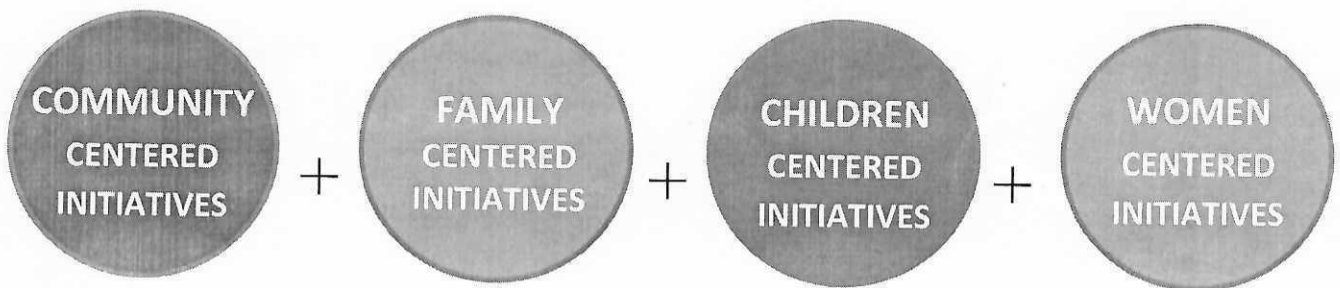
Respected AGM Members,

It is with a deep sense of gratitude that I present to you my report for the year 2024-2025.

This year, our theme for the Annual General Meeting is "Igniting Potential, Realizing Dreams." It is a powerful call to action that reminds us of the hidden greatness within each of you. When we recognize and nurture the gifts God has placed in us, we begin to light a flame of purpose, passion, and possibility. This theme challenges us to invest in people, empower their journeys, and create spaces where dreams can take flight. As we ignite potential, we don't just change lives—we shape futures, build hope, and bring God's vision for His people into reality.

I praise God for each one of you, especially for our faithful Indian donors.

Let me now outline my report for the year 2024-2025.



COMMUNITY-CENTERED INITIATIVES

We often hear the word "community" in our society—directly, indirectly, consciously, or unconsciously. Indeed, our focus is on the community.

Community is the heart of human connection—a place where people come together not just to live, but to lift one another, share dreams, grow in unity, and turn shared purpose into lasting impact. It's where belonging blooms, and together, we become more than we could ever be alone.

Community is where connection thrives and belonging begins. In a true community, every voice matters and every hand helps. Together, we build more than homes—we build hope. Community is not just about proximity, but about shared purpose. It's in community that we find strength, support, and a sense of home.

I am pleased to report that over the years; we have witnessed holistic transformation in 637 rural communities across more than 1,382 geographical areas throughout Northern India. We were privileged to be the first to enter and initiate whole-community programs, and today, many of these are self-reliant. This year, our efforts continued in 435 communities, with an additional 113 newly pioneered.

Let me present the proactive ventures we undertook amidst numerous challenges:


CHAIRMAN
For NATIONAL FELLOWSHIP


SECRETARY

Community Care

Throughout the reporting year, we engaged in community care by first understanding the needs of local people and their families. We joined community groups to better understand the lives of those living there. Our participation in initiatives focusing on social welfare, healthcare, and education helped us build relationships and trust—our greatest strength.

- Key pillars in our community engagement included:
- Building Relationships
- Community care is about building trust and rapport—attending events, engaging in conversations, and showing genuine interest in people's lives.
- Sharing Skills and Resources - We offered our skills and resources, such as teaching, tutoring, and volunteering our time to support local efforts.
- Patience and Persistence - Building meaningful relationships and addressing complex issues takes time. We stayed patient, consistent, and resilient despite the challenges.

Community Engagement

Community engagement is essential in addressing racial, ethnic, gender, and economic inequities. We observed that people often connect through shared characteristics or environments. Engaging with these groups collaboratively brought positive change.

Our process involved:

- Needs Assessments to identify the gaps.
- Cultural Sensitivity in planning and implementation.
- Accessibility, ensuring inclusive services for all.

Community Impact

While addressing issues such as education, poverty, and sustainability, we learned:

- Volunteering alongside locals builds trust and impact.
- Engaging with existing structures and indigenous efforts strengthens outcomes.
- Meeting specific needs earns appreciation and builds credibility.
- Advocating for change inspires enthusiasm and gratitude.
- Organizing grassroots events, such as neighborhood clean-ups, fosters unity.

Monitoring the wellbeing of the aged and weak has been a special focus. We received immense appreciation for promoting unity, values, selfless care, and strong relationships.

We are pleased to report that with God's grace; our community initiatives have been fruitful. We invested: ₹2,836,800.00 toward 232 focused communities, ₹813,400.00 toward 37 Scheduled Tribe communities, ₹108,600.00 toward 43 Other Backward Communities, and ₹458,400.00 toward 68 Scheduled Caste communities.

FAMILY-CENTERED INITIATIVES

Families are the backbone of any community. At NF, our family-centric care model honors the strengths, cultures, and expertise that families bring. It builds respectful partnerships that improve experiences, reduce stress, and enhance health outcomes, especially for children with chronic conditions.

We recognize that families come in many forms—big or small, nuclear or extended, single-parent or multi-generational. Regardless of structure, families nurture, protect, and influence each other. They are dynamic, cultural systems with unique values and dreams. While everyone is born to parents, not all are born into loving families. The presence—or absence—of strong families has a deep impact on society.


CHAIRMAN
For NATIONAL FELLOWSHIP


SECRETARY



Gourav Shaw, a happy boy who lives in this slum and I am grateful to National Fellowship for supporting me to study since I began to go to school.

I am now in Class VIII. I greatly love mathematics and drawing. He happily expressed that we live in a small one-room house, we are happy. My parents work hard to provide for us and feed us. I am grateful to them and one day, when I work, I plan to stop them working. I will pay for every need of my family.

I am proud to be born into this beautiful family.



Furthermore, we have provided psychosocial counseling to 876 children, conducted 1,192 club meetings, and touched the lives of an additional 868 new children. We also increased our investment by ₹45,618.00 over last year.

WOMEN-CENTERED INITIATIVES

Our women-centered initiatives emphasized choice, control, and continuity of care. We empowered women to make informed decisions, tailored care to their needs, and addressed gaps in healthcare, especially in rural areas.

We invested ₹89,400.00, and an additional ₹77,960.00 in education and literacy initiatives. Many girls are still denied education with the belief that “they’ll belong to someone else’s family”—a heartbreaking reality we continue to challenge.

Our regular initiatives included:

- Counseling
- Tailoring training
- Socio-cultural activities: singing, dancing, parenting workshops

To support our programs, we spent: ₹64,692.00 on printing & stationery (for fundraising), ₹612,970.00 on staff salaries, wages, & insurance, ₹16,771.00 on telephone & internet expenses, and ₹9,440.00 on conveyance & travel.

CONCLUSION

Thank you for your sacrificial generosity. Local donations have increased, enabling us to carry out our plans. Still, the needs are many, and we continue to operate with faith, managing from “hand to mouth” while staying true to our vision. Truly, thank you!

Our theme for 2025-2026 is “Igniting Potential, Realizing Dreams.” Our Bhubaneswar Resource Center will be key to achieving self-reliance.

With deepest appreciation,
Susanta Patra
Secretary


CHAIRMAN
For NATIONAL FELLOWSHIP


SECRETARY

This year, we focused on the following principles in our family initiatives:

- Mutual respect and collaboration
- Trust through relationship
- Open communication
- Shared decision-making
- Willingness to negotiate

Through partnerships, we invested ₹132,000.00 in supporting the poor, aged, and destitute.

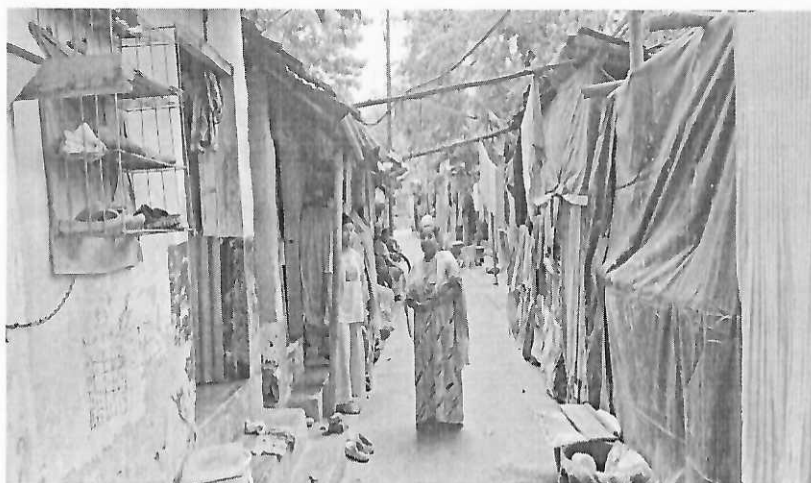
CHILDREN-CENTERED INITIATIVES

Children are at the heart of the National Fellowship. Our child-centered initiatives prioritize each child's voice, needs, and development. We address not just education and healthcare, but emotional, social, and recreational needs as well.

We support children in learning, growing, and achieving their potential while recognizing the family's essential role. Our holistic services include:

- Education support
- Counseling
- Nutritious food
- Recreational opportunities

We invested ₹571,695.00 during the year. A few success stories:



Priya Bhuiya lives in a slum with her parents. With our support, she is now in Class XI and pursuing her dream of learning fashion design. Her parents—her father a sweeper and her mother a maid—are proud of her dedication.



Stuti Neye, is another generous girl, promoted to Class VII. She said: "I am grateful to National Fellowship for meeting all my needs, especially for my studies and music classes. I am who I am today because of National Fellowship."

She further said that my father is a Driver and my Mother Amba is a house wife. My hobby is of playing Keyboard and Dance. I am delighted informing you that NF financial help has brought me so far. Without it, I would have been illiterate.




CHAIRMAN
For NATIONAL FELLOWSHIP


SECRETARY